



2014 RAMMA Officers

Important Dates

**RAMMA
MEETING** **WED**
Lamar Park **10/1**
6:30 pm

MRPA **10/6-10**

NRPA **10/14-16**

The Haunted Trail **OCT**
Avant Park **29,30**
Oxford, MS

RAMMA T-Shirts **Coming!**

Rebelman **April 12,**
Sprint Triathalon **2015**

RAMMA BANQUET **TBD**

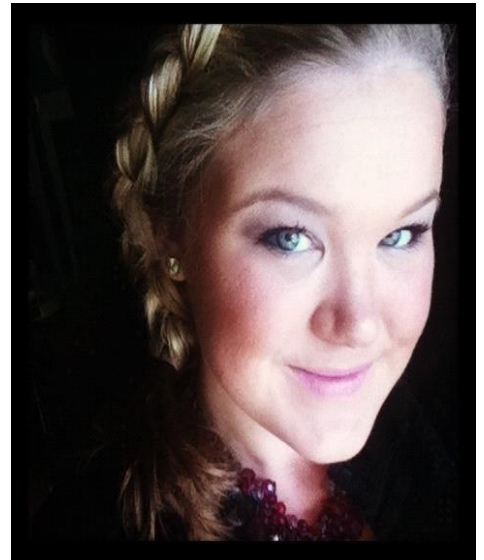
RAMMA Info

- Dues this year will be \$25 and can be turned in during meetings.
- Meetings will be conducted the first Wednesday of every month.
- Dues will include a T-Shirt when they are made.
- Attending the meetings earns no less than .1 CEUs

Whitney Reeser, **President**

Whitney is a senior at the University of Mississippi. She has always been active in Recreation Administration, as well as other campus activities.

Over the course of her college career, Whitney completed her internship at the National Bison Range, became an NRPA member, and was selected to be a member of the hiring committee for RA Associate Professor position.



Treffery Brock, **Vice President**

Treffery is a senior at the University of Mississippi. Treffery is always full of energy and prepared to do whatever it takes to help others out.

At the University of Mississippi, she is heavily involved with Campus Recreation. She also worked for the Bon Air Community Association in Richmond, Virginia.



Victoria Burgos, **Secretary/Treasurer**

When it comes to advocating environmental issues, Victoria excels in all aspects. She continually fights to ensure that every University of Mississippi student does his/her part to make this world a better place.

Victoria is a senior at the University of Mississippi has been involved with Students for a Green Campus since 2012. During this time, she began the University's composting program and manages in the Office of Sustainability.

To add to her amazing environmental achievements, she also works as a community Organizer for environmental and social justice issues.



Tips on Preparing for MRPA/NRPA

With MRPA and NRPA just around the corner, many students are asking how exactly they should prepare before attending the conference. While it is important to attend the conferences, it is just as important to be prepared both mentally and physically. These are a few tips and suggestions that could greatly increase your conference experience.

It is important for each student to evaluate why it is they are attending the conference. For most students, it is a requirement for RA 400. This is put into place so each student has the opportunity to network with other professionals from all over the country. The conferences are a great place to get connected with internships, professional advice, and develop creative ideas for future careers in the Park and Recreation field.

When attending the conferences, it is a good idea to print off business cards. During the conferences, you will meet lots of people and have a very limited amount of time to meet with each one. This is where the business cards come in handy. Business cards can be purchased from www.vistaprint.com for roughly \$30. It is best to include your Name, Address, School, and a set of Phone Numbers and Email Addresses. It impresses the professionals and gives you a greater chance of leaving a lasting impression.

Having a few resumes on hand is also a great idea. Students sometimes are given the opportunity to be interviewed for internships and jobs at the conference themselves. Be sure that the resume is up-to-date and done in a professional manner. It is advisable to have someone look over it for errors prior to taking it to the conference. The resume serves as a quick reference for professionals to use to determine how qualified you are in a particular area. If the professional has something tangible, they are more than likely going to take you more seriously.

Probably one of the most important things to do before attending the conference is to make sure you dress for success. Often times business casual is the least you want to do. The better dressed you are, the greater chance you have of getting the internship or job you want. Being well groomed and having proper hygiene also provide you with a great first impression. Since the professionals meet with so many other students, having a professional attire can really make a student stand out in a positive way. Remain professional at all times.

With these tips and suggestions, you have the potential to find great success during the conference.

NRPA INFO

- Located at the Charlotte Convention Center in Charlotte, North Carolina
- Cost per Student is: \$100 Non-member, \$0 NRPA Member
- Non-member registration fees automatically include individual membership to NRPA for one-year.
- Call: 888.385.8010 for questions in regards to Registration
- REGISTER AT:
<http://www.nrpa.org/Congress2014/registration/>

Professors Corner: Dr. Lee

